

Has enrollment actually increased enough to warrant new buildings?
 When the last bond issue was passed in 1979, the student population was 179. Now the enrollment is 347, a 94-percent increase. The district's value has gone from \$29 million to \$96 million, a 230-percent increase. Tax rates have gone from \$1.28 to \$1.45, a 13-percent increase.

Why are all present classrooms being used?

Increased enrollment has resulted in two class sections in grades K, 1, 4 and 6. Just a few years ago these grades only had one section. High school students are now required to take additional math, science and foreign language classes to graduate under the Recommended High School Program. To help students learn the latest technology, the district has two technology labs and a Business Computer Information Systems lab. These additional programs have taken five of the rooms built in the expansion project during the early 1990's.

How do transfer students affect our district?

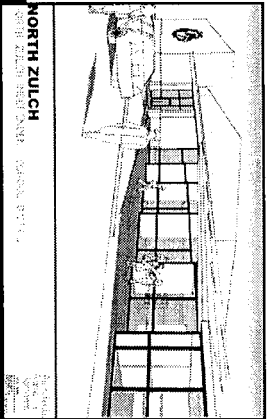
At present, there are about 70 transfer students enrolled at N.Z.I.S.D, and 18 of them are children of employees or graduating seniors. At the beginning of the 2005-2006 school year, five transfer students in fourth grade caused the class size to exceed the 22:1 ratio required by the state prompting a new section to be added to grade four. This is the only grade where transfers caused an addition in staff. At other grade levels where two teachers were required, the additional staff would have been needed regardless of transfer students. There are 22 students that could attend N.Z.I.S.D. who have transferred out of the district.

Do transfer students cost the district?

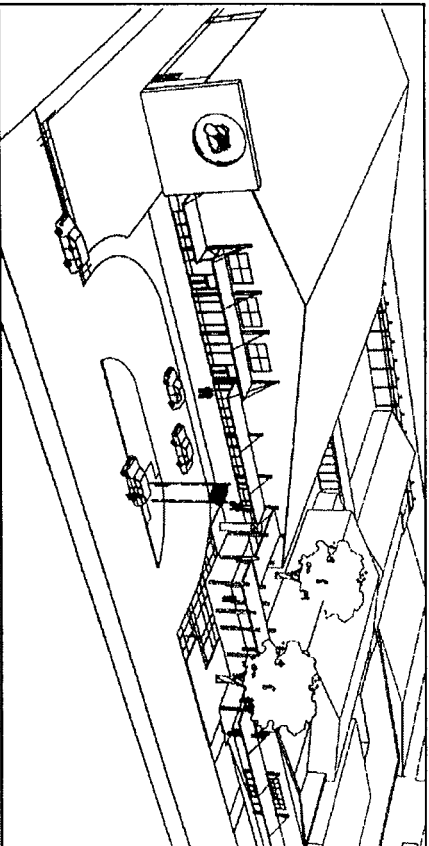
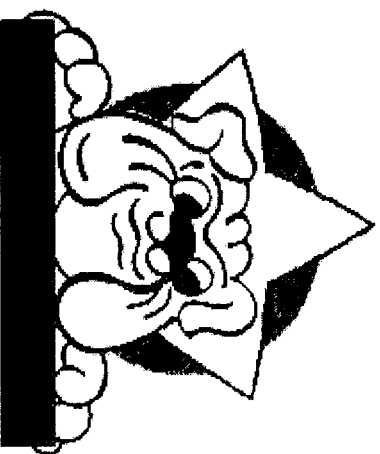
Each student generates about \$3,300 in funding from the state. This means the 70 transfer students earn about \$231,000 for the district. The one extra teacher needed because of transfer students in fourth grade cost the district about \$31,000. This means the district gains about \$200,000 more from transfer students without any additional cost.

When is the election?

The bond election has been called for Saturday, May 13. Early voting can be done from Monday, May 1 to Tuesday, May 9 from 8 a.m. to 4 p.m. with extended hours from 5 p.m. to 9 p.m. on May 2, 4 and 9.



NORTH ZULCH I.S.D. BOND ELECTION Frequently Asked Questions



NORTH ZULCH
 NORTH ZULCH INDEPENDENT SCHOOL DISTRICT

Architects
 Rabbe + Partners

BOND ELECTION FREQUENTLY ASKED QUESTIONS

What has the school board approved for building improvements?

After reviewing input from the community Building Steering Committee, the school board called a bond election to fund construction of additional secondary classrooms, a larger cafeteria and a new competition gym to be used for physical education, athletics, graduations and other school and community events.

Why are facility improvements needed now?

The idea of improving the educational facilities is not a new one. About five years ago, the school board contracted with an architect to do a needs assessment and found the same needs then that there are now: all classrooms are in use; there is no room for a distance learning facility, conference areas, technology equipment or additional classrooms; and there is no storage for textbooks and records.

Didn't we just add a classroom wing to the building?

The additional classrooms house the intermediate grades, and the science classrooms were built in 1996. These were built to take care of growth and enrollment over a ten year period. Now the classrooms are occupied. With the recent demolition of the old elementary, the school lost some classrooms and storage space.

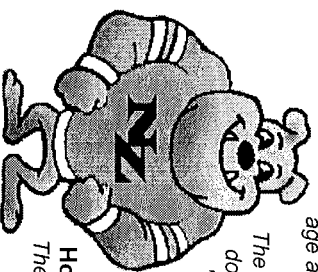
Why do we need a new cafeteria?

The current cafeteria has limited seating, so the school district begins serving lunch to students at 10:30 a.m. to ensure they all have an opportunity to eat. High school students begin lunch at 1 p.m. The cafeteria also doubles as an auditorium. The new cafeteria will seat 350 people, more than double the seating of the present cafeteria. It will be used for school programs and will also be available to the community for special events.

Why do we need another gym in North Zulch?

The district does not need another gym. It needs one competition gym that meets U.I.L. standards for athletics and that adequately seats spectators at games and at special events like graduations. It needs a gym with adequate dressing rooms for home and visiting teams, coaches and referees. Training facilities, equipment storage and laundry facilities are included in the new gym.

The current gym was constructed over 30 years ago and does not meet the requirements on competition gyms. The "old" gym was built in the 1930's and is not a safe facility for today's more competitive games. The future use of the "old" gym will be determined after construction of a new competition gym.



How much will the new facilities cost?

The school board has set a dollar amount of \$5.5 million.

How will this impact the tax rate?

The tax rate will increase by about \$0.38 in the beginning and decrease to \$0.23 or less over the life of the bond.

What does this mean in tax increase?

An average house in N.Z.I.S.D. is valued at \$47,000, and most homeowners qualify for a homestead exemption of \$15,000, making the property taxed at \$32,000.

A successful bond election would increase the taxes on an average home by about \$10 per month, or \$122 per year. On a \$50,000 house, taxes would increase less than \$12 per month, or \$138 per year.

What if a homeowner is 65 or over?

Any homeowner 65 or over qualifies to have school taxes frozen at present tax levels. The school taxes on the home and up to two acres would not increase while the homeowner possesses the property, even if the bond election is approved or if the property increases in value.

What about ag exempt property?

Property that qualifies for an agriculture exemption would still qualify and be taxed at \$75 per acre instead of assessed value, as long as it remains in agriculture production. For each 100 acres, taxes would increase \$28.50 per year, or about \$2.50 per month.

When a bond issue passes, is there a chance for state fund assistance?

Under the current school finance system, the state of Texas has a program called Existing Debt Allotment (EDA). This program has been funded by the legislature for the past 10 years. If a district passes a bond issue, two to four years later they qualify for EDA assistance. In North Zulch, assistance could be 12-15-percent of the debt payment.

When was the last bond issue passed in North Zulch?

The last bond issue was passed in 1979 for construction of the high school wing. The bond required an initial I&S tax rate of \$0.40 to pay the debt and was 22 years in length. The bond was paid off in 2002.

Where will the new facilities be built?

The new facilities will be constructed just to the west of the present gym and the intermediate wing, where the 1955 building stood before being demolished in March.

When would the new buildings be ready for use?

It is possible to be moved in by the start of the 2007-2008 school year, but the move would probably be made during December of 2007.

From: "Roy Gilbert" <gilbertr@northzulchisd.net>
Reply-To: <gilbertr@northzulchisd.net>
Date: Fri, 31 Mar 2006 15:45:46 -0600
To: "Tina Baiter" <news@madisonvillemeteor.com>
Subject: RE: Bond Election Brochure

Ms. Baiter--

The brochure is perfect. We will be passing them out next Monday to parents who attend the scheduling night. We will also distribute at any available opportunity. I really appreciate your assistance. The brochures will play a big part in the success of our bond campaign.

Thanks for all that you do for North Zulch and for your coverage of North Zulch events.

Roy Gilbert

From: "Roy Gilbert" <gilbertr@northzulchisd.net>
Reply-To: <gilbertr@northzulchisd.net>
Date: Fri, 31 Mar 2006 09:30:25 -0600
To: <news@madisonvillemeteor.com>
Subject: Brochure

Ms. Baiter--

You have done a super job with the brochure. You have a real skill with this. With your permission, I would like to print these and begin distributing them on Monday.

Let me know if you receive this. Email back on PDF and I will print out. Thanks for your help. This is a whole lot better than anything we would have done.

Roy Gilbert

SAMPLE RESOLUTION

2006 MEDIA HONOR ROLL

WHEREAS, in each community, the public schools are shaped by that community to provide the most appropriate and effective education for the schoolchildren who attend those schools; and

WHEREAS, public schools are dependent on the community's support in countless ways, including support in setting goals for the education of our children, in establishing successful volunteer and booster programs at the schools, for annual funding of operations, in periodic bond elections, in the election of qualified school board members; and

WHEREAS, much of the community's knowledge and opinions about the public schools rely on responsible reporting by local media representatives who decide which news to share with the community, how much attention will be focused on various issues, and what the tone of the reporting will be; therefore

NOW BE IT RESOLVED, that the Board of Trustees of the
North Zulch ISD (school district) places the name

of Tina Baiter of the Madisonville Meteor (media/reporter) on the statewide Media Honor Roll, calling attention to the ongoing responsible and exemplary nature of reporting on this community's public schools. We express our appreciation for your balanced and accurate approach to sharing with this community both the challenges facing our schools and the successes achieved by the teachers and students. Your work has aided this community in focusing on the goal of providing the best public schools we can for every child who attends them.

4/13/2006

Date


Board President